

**PG** **517** **B 1 B 1**

**Gear design**

**Type**

**Unit**

**Dis-  
placement**

**Rotation**

**Shaft**

**Flange**

**Shaft seal**

**Inlet side ports option**

**Outlet side ports option**

**No rear ports**  
(rear ports on request)

Code	Type
P	Pump

Code	Unit
	Pump
A	Single unit
M	Single distributor unit
B	Multiple unit

Displacement	
Code	ccm
0140	14.0
0160	16.0
0190	19.0
0230	23.0
0250	25.0
0280	28.0
0330	33.0
0380	38.0
0440	44.0
0520	52.0
0700	70.0

Code	Rotation
C	Clockwise
A	Counter-clockwise

Code	Shaft
D1 <sup>2)</sup>	13T, 16/32DP, 41.2L, SAE "B" spline
M1 <sup>2)</sup>	Ø22.2, 6.3key, no thread, 41.2L, SAE "B", parallel
M2 <sup>2)</sup>	Ø25.4, 6.3key, no thread, 46L, SAE "B-B", parallel
T1 <sup>3)</sup>	Ø21.59, 11.2L, 4.0key, M14x1.5, taper 1:8

Code	Port options
E6E5	1"-11 BSP thread/ 3/4"-14 BSP thread rec. from 14 ccm to 19 ccm
E7E6	1 1/4"-11 BSP thread/ 1"-11 BSP thread rec. from 23 ccm to 38 ccm
E8E6	1 1/2"-11 BSP thread/ 1"-11 BSP thread rec. from 44 ccm to 70 ccm
J9J8	Ø26 mm-Ø55 mm-M8 square flange Ø18 mm-Ø55 mm-M8 square flange rec. from 14 ccm to 52 ccm
L3L2	Ø27 mm-Ø51 mm-M10 diamond flange Ø19 mm-Ø40 mm-M8 diamond flange rec. from 14 ccm to 52 ccm
P3P2	1"-M10 SAE metric flange 3/4"-M10 SAE metric flange rec. from 16 ccm to 23 ccm
P4P3	1 1/4"-M10 SAE metric flange 1"-M10 SAE metric flange rec. from 25 ccm to 44 ccm
P5P3	1 1/2"-M12 SAE metric flange 1"-M10 SAE metric flange rec. from 44 ccm to 70 ccm

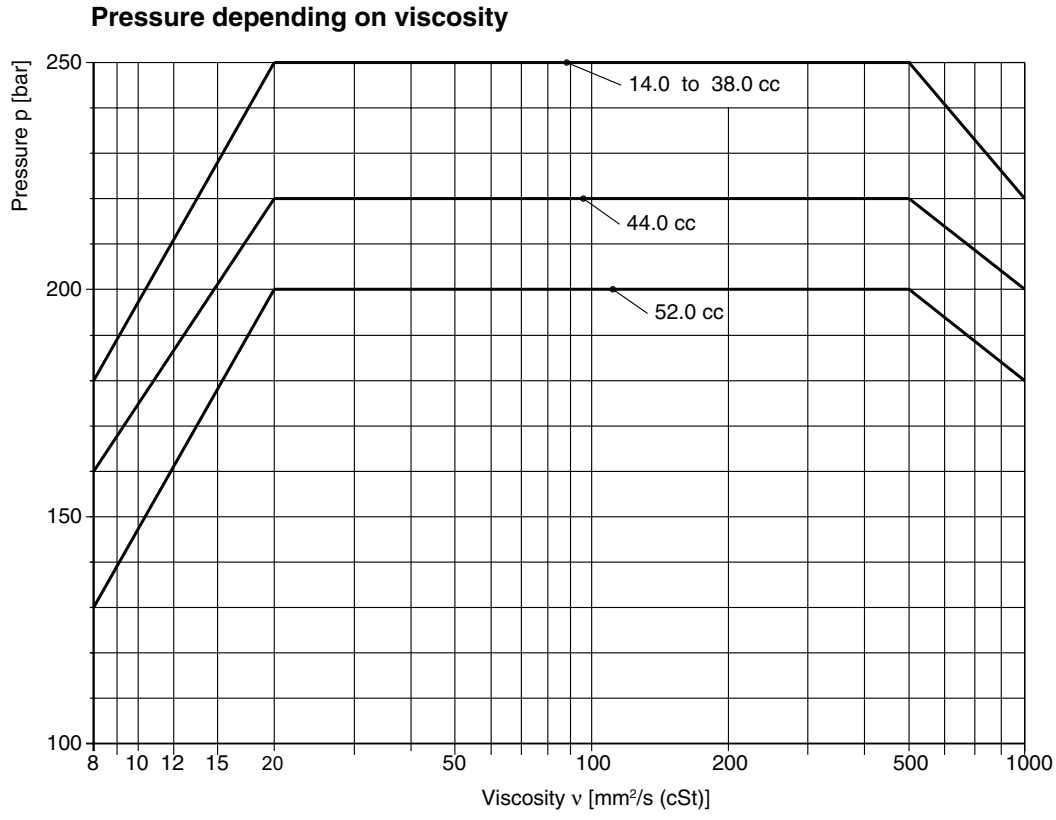
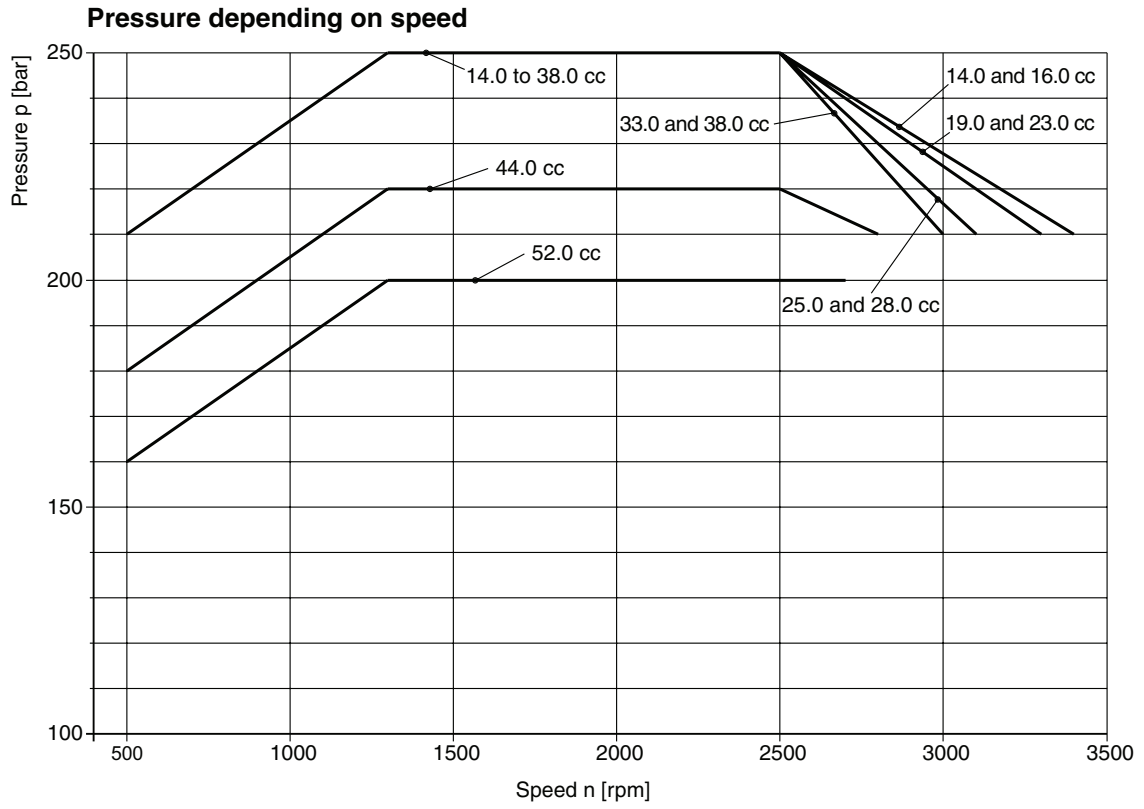
Example: P4 = inlet port  
P3 = outlet port

Code	Shaft seal
X	No seal
N	NBR
V	FPM

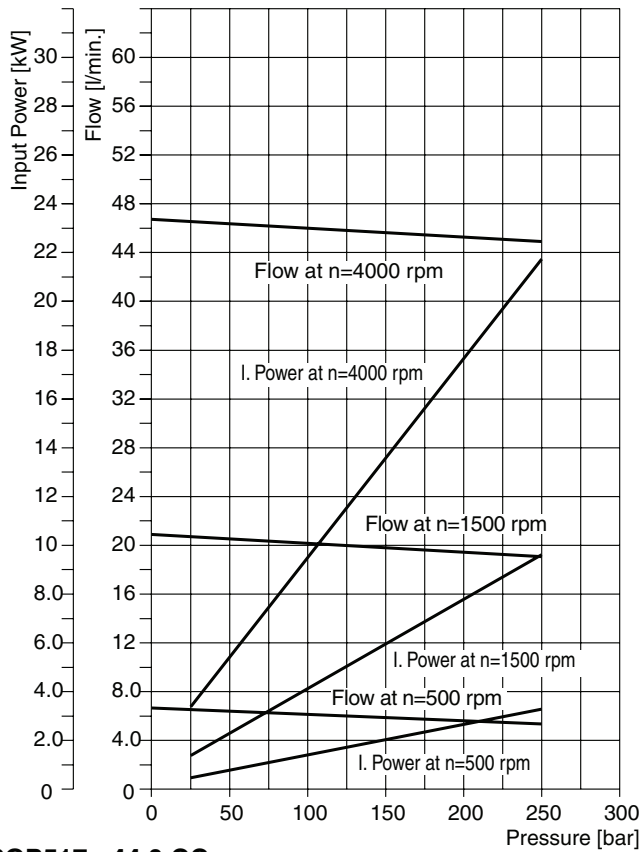
Code	Flange
D7	98.4x128.2 - Ø50.77 rectangular
H3	146.1 - Ø101.06 SAE "B" 2 bolt flange

<sup>2)</sup> Only used with flange H3.

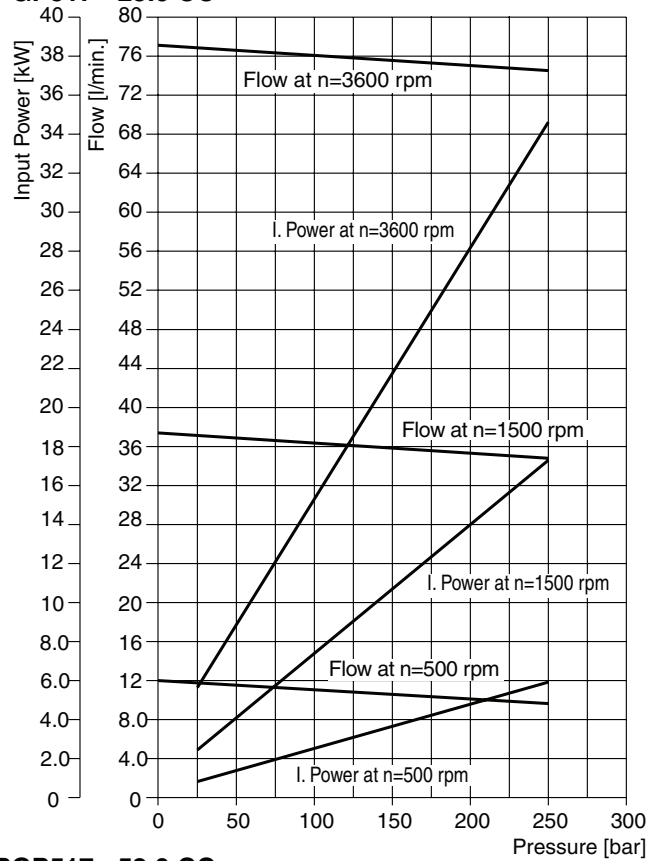
<sup>3)</sup> Only used with flange D7.



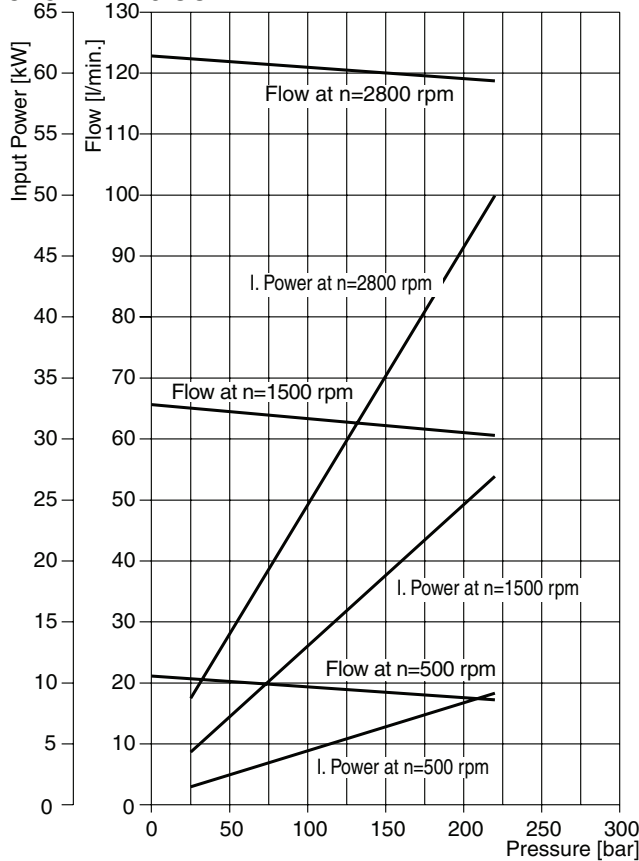
**PGP517 - 14.0 CC**



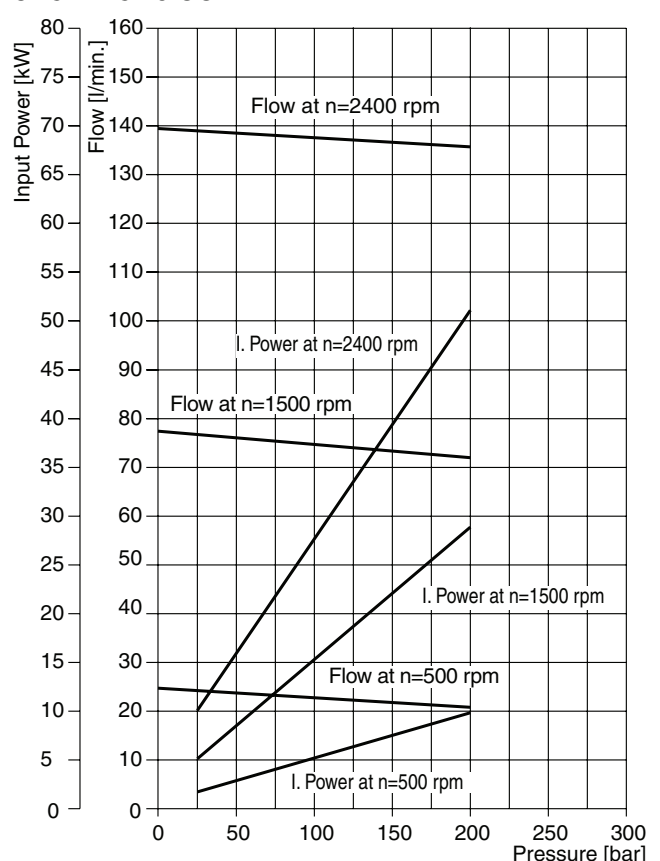
**PGP517 - 25.0 CC**



**PGP517 - 44.0 CC**



**PGP517 - 52.0 CC**



PI PGP-PGM UK.PMD RH

Fluid temperature: 45 °C ± 2K ; Viscosity: 36mm<sup>2</sup>/s ;

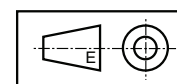
Inlet pressure: 0.9 + 0.1 bar absolute



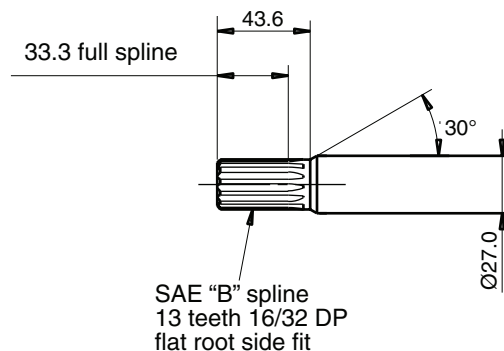
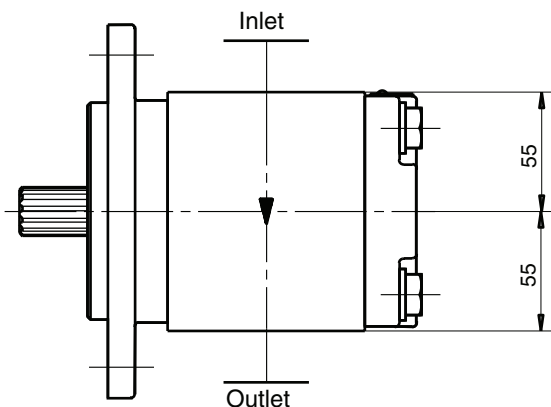
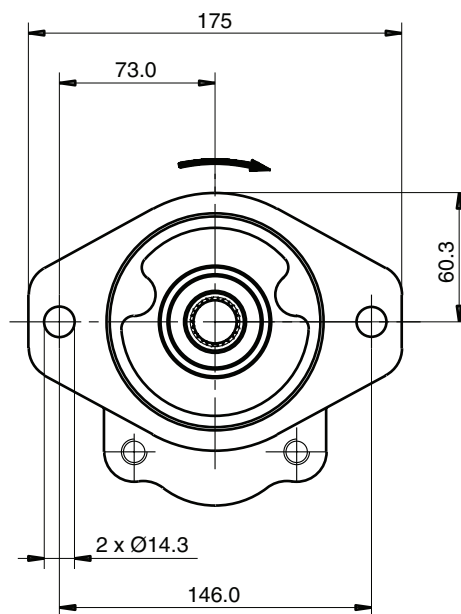
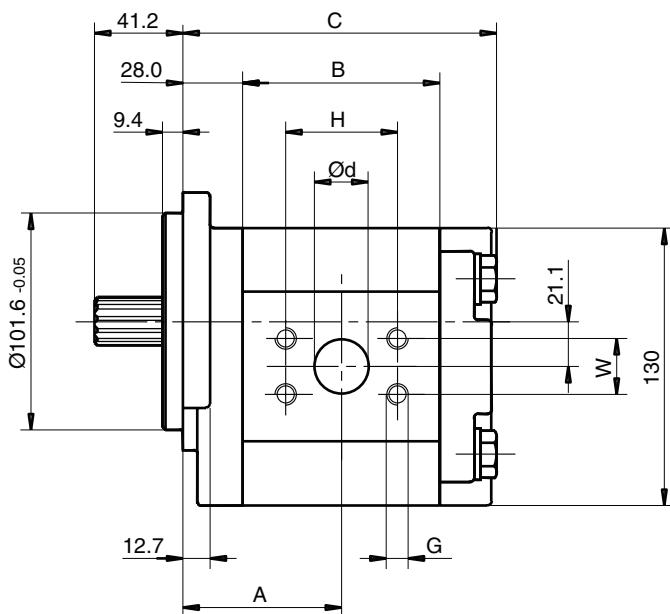
**PGP517 A XXXX Y D1 H3 N SS PP B1 B1**

“Y” = C (clockwise rotation)  
 = A (counter-clockwise rotation)

Displacement XXXX cm <sup>3</sup> / rev	Dimension			Inlet port					Outlet port				Speed of rotation		Working pressure max. bar	Order number direction of rotation		
	A	B	C	SS	d	G	H	W	PP	d	G	H	W	min. rpm		max. rpm	clockwise	counter-clockwise
0140	62.1	68.3	122.8	P2	3/4"	M10	47.63	22.23	P2	3/4"	M10	47.63	22.23	500	3000	250		
0160	63.2	70.3	124.8	P3	1"	M10	52.37	26.19	P2	3/4"	M10	47.63	22.23	500	3400	250		
0190	64.7	73.3	127.8	P3	1"	M10	52.37	26.19	P2	3/4"	M10	47.63	22.23	500	3300	250		333 9112 180
0230	66.7	77.4	131.9	P3	1"	M10	52.37	26.19	P2	3/4"	M10	47.63	22.23	500	3300	250	333 9111 193	333 9112 177
0250	67.7	79.4	133.9	P4	1 1/4"	M10	58.72	30.17	P3	1"	M10	52.37	26.19	500	3100	250		333 9112 388
0280	69.2	82.4	136.9	P4	1 1/4"	M10	58.72	30.17	P3	1"	M10	52.37	26.19	500	3100	250	333 9111 669	333 9112 274
0330	71.7	87.5	142.0	P4	1 1/4"	M10	58.72	30.17	P3	1"	M10	52.37	26.19	500	3000	250		333 9112 374
0380	74.3	92.5	147.0	P4	1 1/4"	M10	58.72	30.17	P3	1"	M10	52.37	26.19	500	3000	250	333 9111 290	333 9112 412
0440	77.3	98.6	153.1	P4	1 1/4"	M10	58.72	30.17	P3	1"	M10	52.37	26.19	500	2800	225	333 9111 150	333 9112 346
0520	81.3	106.7	161.2	P5	1 1/2"	M12	69.82	35.71	P3	1"	M10	52.37	26.19	500	2700	190	333 9111 360	333 9112 357
0700	90.4	124.9	179.4	P5	1 1/2"	M12	69.82	35.71	P3	1"	M10	52.37	26.19	500	2300	165	333 9111 563	



**Dimensions (clockwise rotation shown)**



PI PGP-PGM UK.PMD RH

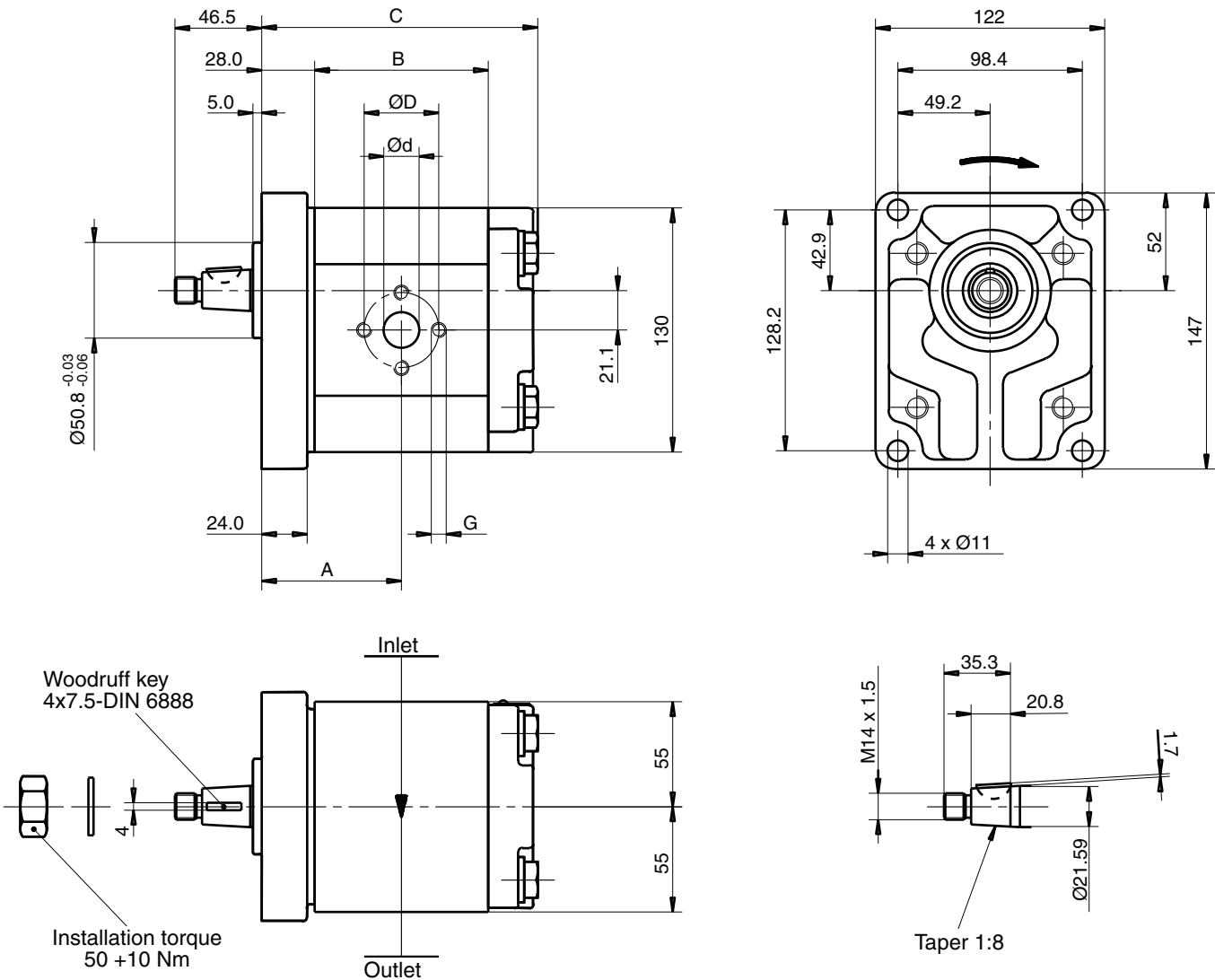
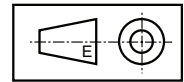


**PGP517 A XXXX Y T1 D7 N SS PP B1 B1**

“Y” = C (clockwise rotation)  
 = A (counter-clockwise rotation)

Displacement XXXX	cm³/rev	Dimension			Inlet port			Outlet port			Speed of rotation		Working pressure max. bar	Order number direction of rotation			
		A	B	C	SS	d	D	G	PP	d	D	G		min. rpm	max. rpm	clockwise	counter-clockwise
0140	14.0	62.1	68.3	122.8	L3	27	51	M10	L2	19	40	M8	500	3400	250	333 9111 503	
0160	16.0	63.2	70.3	124.8	L3	27	51	M10	L2	19	40	M8	500	3400	250	333 9111 505	333 9112 430
0190	19.0	64.7	73.3	127.8	L3	27	51	M10	L2	19	40	M8	500	3300	250	333 9111 285	333 9112 212
0230	23.0	66.7	77.4	131.9	L3	27	51	M10	L2	19	40	M8	500	3300	250	333 9111 119	333 9112 213
0250	25.0	67.7	79.4	133.9	L3	27	51	M10	L2	19	40	M8	500	3100	250	333 9111 047	333 9112 068
0280	28.0	69.2	82.4	136.9	L3	27	51	M10	L2	19	40	M8	500	3100	250	333 9111 287	333 9112 214
0330	33.0	71.7	87.5	142.0	L3	27	51	M10	L2	19	40	M8	500	2600	250	333 9111 014	333 9112 035
0380	38.0	74.3	92.5	147.0	L3	27	51	M10	L2	19	40	M8	500	2300	250	333 9111 015	333 9112 036
0440	44.0	77.3	98.6	153.1	L3	27	51	M10	L2	19	40	M8	500	2000	220	333 9111 046	333 9112 040
0520	52.0	81.3	106.7	161.2	L3	27	51	M10	L2	19	40	M8	500	1700	200	333 9111 242	333 9112 215

**Dimensions (clockwise rotation shown)**



PI PGP-PGM UK.PMD RH

