



Gear design	
Code	Type
P	Pump
M	Motor

Code	Unit	
	Pump	Motor
A	Single unit	Standard motor with drain port
B	Multiple unit	Standard motor w. two checks
C	—	Standard motor w. one anti-cavitation check (ACC)

Displacement	
Code	ccm
0300	30.0
0350	35.0
0400	40.0
0450	45.0
0500	50.0
0550	55.0
0600	60.0
0650	65.0
0700	70.0
0750	75.0
0800	80.0

Code	Rotation
C	Clockwise
A	Counter-clockwise
B	Bi-directional

Code	Shaft
D1 ²⁾	13T, 16/32DP, 41.2L, SAE "B" spline
E1 ²⁾	15T, 16/32DP, 46.0L, SAE "B-B" spline
E4 ³⁾	14T, 12/24DP, 55.6L, SAE "C" spline

²⁾ Only used with flange A3, H3.
³⁾ Only used with flange A4, K3.

Unit
Displacement
Rotation
Shaft
Flange
Shaft seal

Inlet side ports option
Outlet side ports option

No rear ports
(rear ports on request)

Code	Port options (pumps)
E8E7	1½" -11 BSP Thread / 1¼" -11 BSP Thread rec. from 30 ccm to 50 ccm
T4T3	1¼" - M10 SAE metr. split flange 1" - M10 SAE split flange rec. from 30 ccm to 40 ccm
T5T3	1½" - M12 SAE metr. split flange 1" - M10 SAE split flange rec. from 45 ccm to 60 ccm
T6T4	2" - M12 SAE metr. split flange 1¼" - M10 SAE metr. split flange rec. from 65 ccm to 80 ccm
Code	Port options (motors)
E7E7	1¼"-11 BSP thread/ 1¼"-11 BSP thread

Example: T5 = inlet port
T3 = outlet port

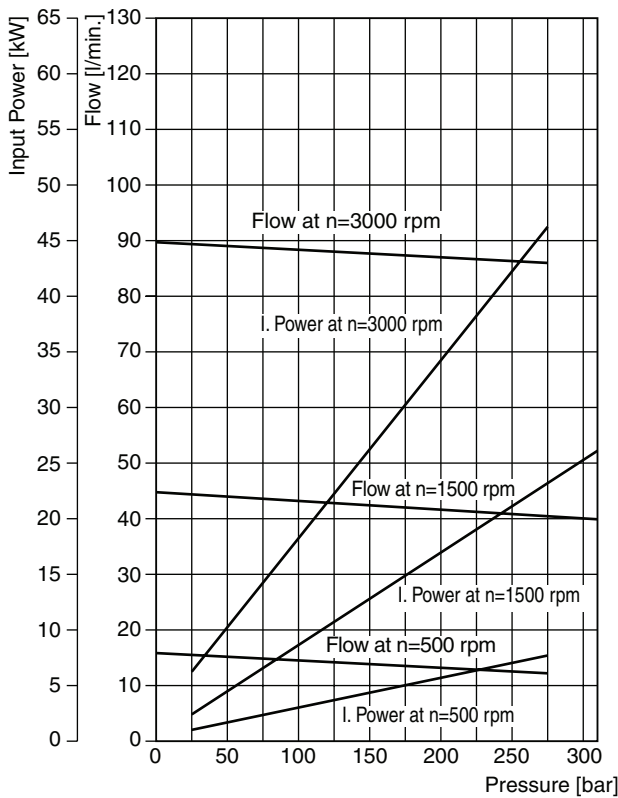
Code	Shaft seal
X	No seal
N	NBR
V	FPM
T	PTFE (motors only)

Code	Flange
A3	89.8x89.8 - Ø101.06 4 bolt square flange
A4	114.5x114.5 - Ø127 SAE "C" 4 bolt square flange
H3	146.1 - Ø101.06 SAE "B" 2 bolt flange
K3	181.0 - Ø127 SAE "C" 2 bolt flange

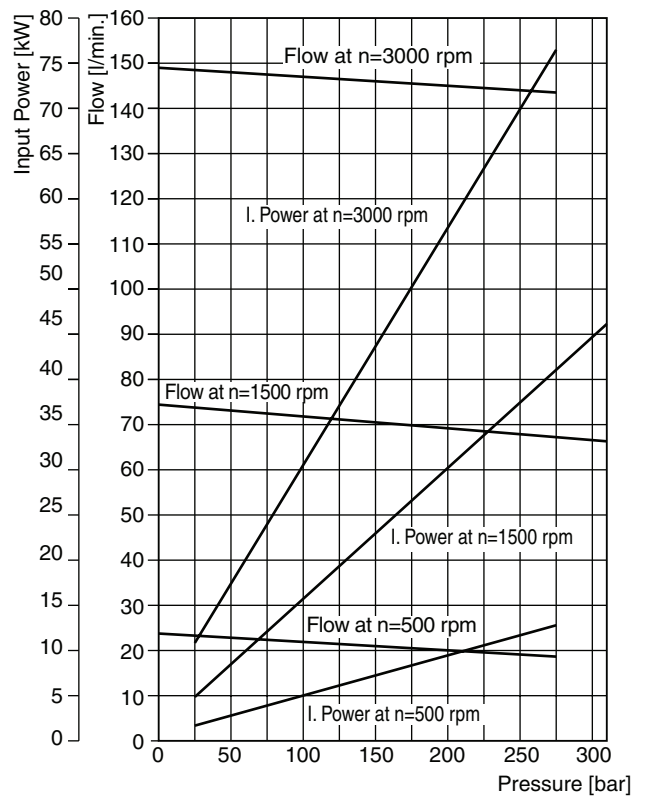
¹⁾ Code of drain line for PGM640 only.
2 Options:
G4 = 1/4"-19 BSP rear drain.
B1 = no drain, unit code must be "B" or "C".



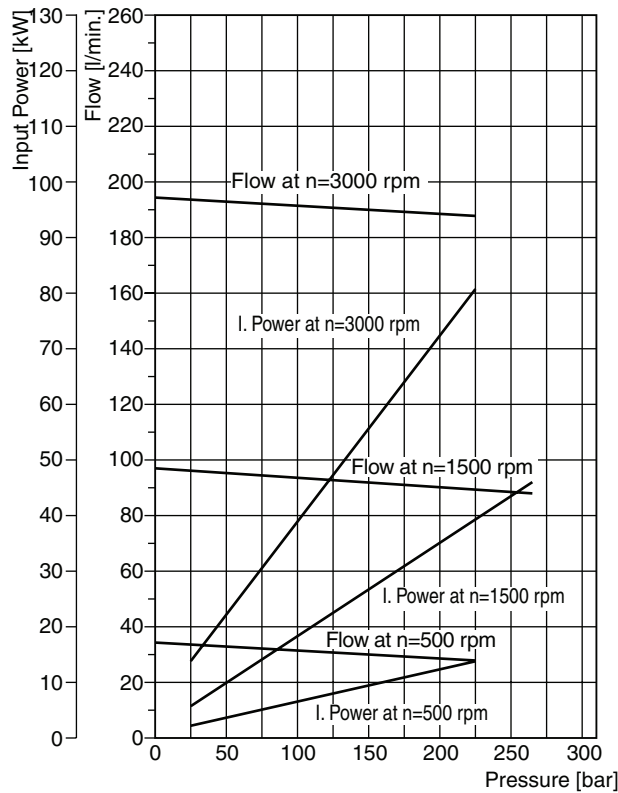
PGP640 - 30.0 CC



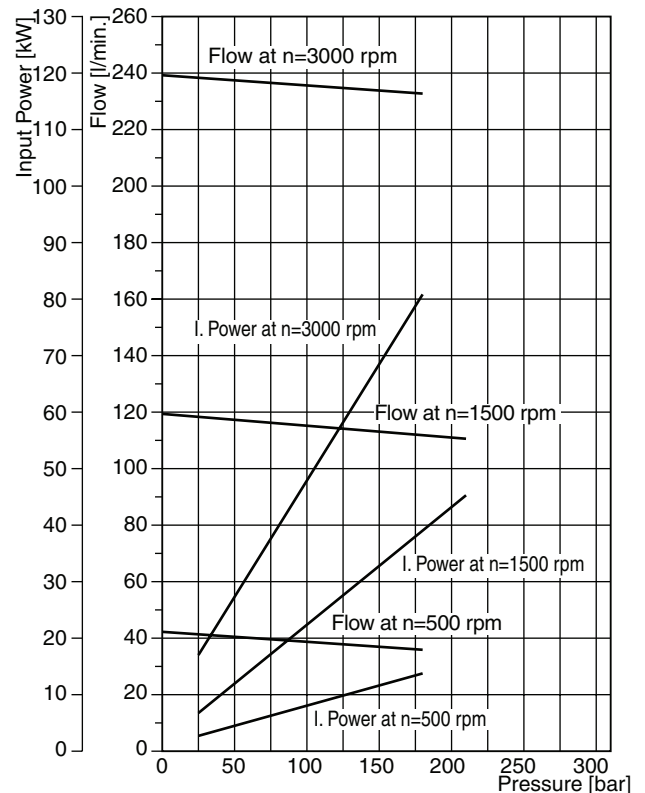
PGP640 - 50.0 CC



PGP640 - 65.0 CC



PGP640 - 80.0 CC



Fluid temperature: 45 °C ± 2K ; Viscosity: 36mm²/s ; Inlet pressure: 0.9 + 0.1 bar absolute

PI PGP-PGM UK.PMD RH

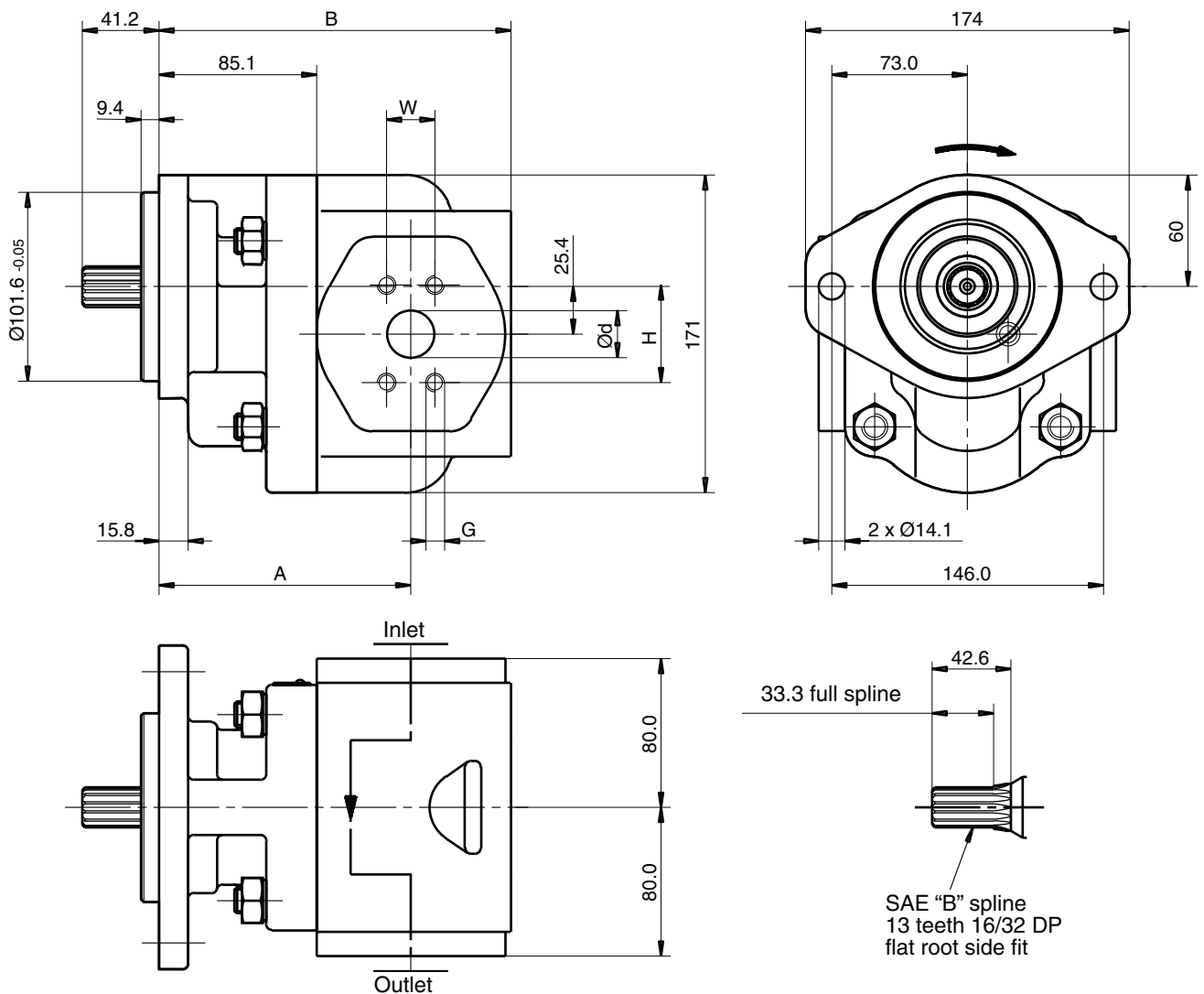
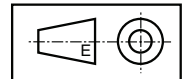


PGP640 A XXXX Y D1 H3 N SS PP B1 B1

“Y” = C (clockwise rotation)
 = A (counter-clockwise rotation)

Displacement XXXX cm ³ / rev	Dimension		Inlet port					Outlet port					Speed of rotation		Working pressure max. bar	Order number direction of rotation		
	A	B	SS	d	G	H	W	PP	d	G	H	W	min. rpm	max. rpm		clockwise	counter-clockwise	
0300	30	128.6	176.1	T4	1-¼"	M10	58.72	30.17	T3	1"	M10	52.37	26.19	500	3000	310		
0350	35	128.6	176.1	T4	1-¼"	M10	58.72	30.17	T3	1"	M10	52.37	26.19	500	3000	310		
0400	40	131.8	182.7	T4	1-¼"	M10	58.72	30.17	T3	1"	M10	52.37	26.19	500	3000	310	704 9111 055	704 9112 020
0450	45	131.8	182.7	T5	1-½"	M12	69.82	35.71	T3	1"	M10	52.37	26.19	500	3000	310		
0500	50	135.6	189.3	T5	1-½"	M12	69.82	35.71	T3	1"	M10	52.37	26.19	500	3000	310	704 9111 016	
0550	55	135.6	189.3	T5	1-½"	M12	69.82	35.71	T3	1"	M10	52.37	26.19	500	3000	310	704 9111 050	704 9112 019
0600	60	138.4	195.8	T5	1-½"	M12	69.82	35.71	T3	1"	M10	52.37	26.19	500	3000	290	704 9111 059	
0650	65	138.4	195.8	T6	2"	M12	77.77	42.88	T4	1-¼"	M10	58.72	30.17	500	3000	265	704 9111 040	704 9112 022
0700	70	142.2	203.2	T6	2"	M12	77.77	42.88	T4	1-¼"	M10	58.72	30.17	500	3000	245		
0750	75	142.2	203.2	T6	2"	M12	77.77	42.88	T4	1-¼"	M10	58.72	30.17	500	3000	225		
0800	80	142.2	203.2	T6	2"	M12	77.77	42.88	T4	1-¼"	M10	58.72	30.17	500	3000	210	704 9111 045	

Dimensions (clockwise rotation shown)



PI PGP-PGM UK.PMD RH

