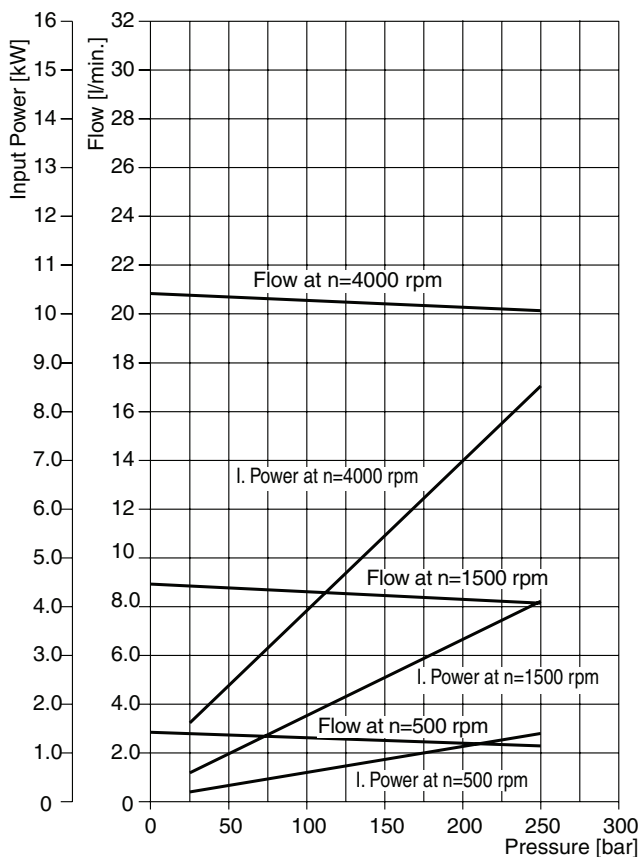
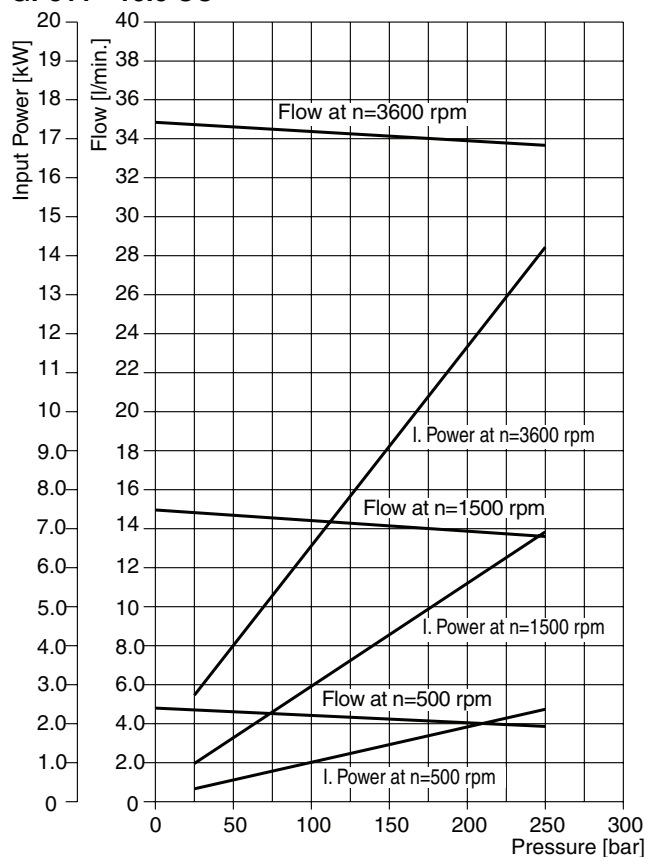


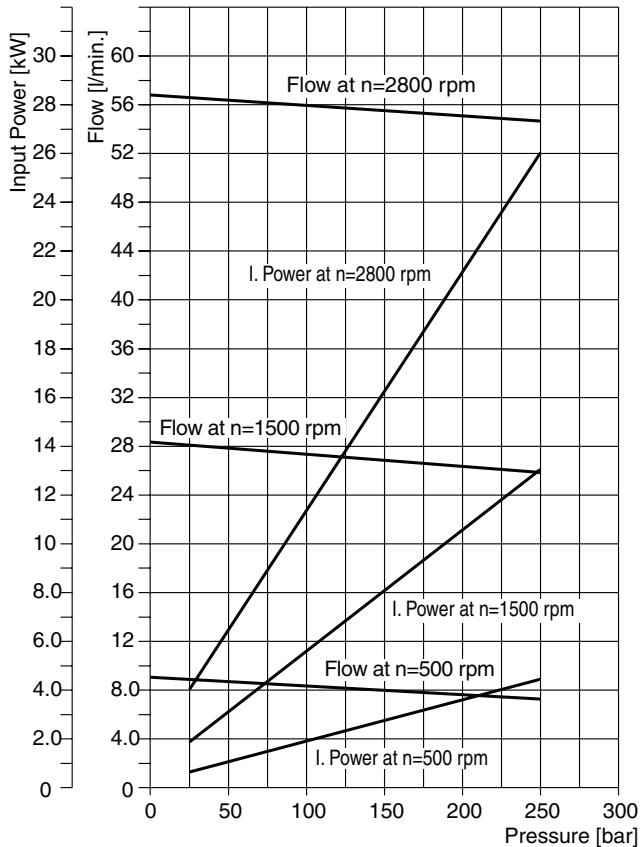
PGP511 - 6.0 CC



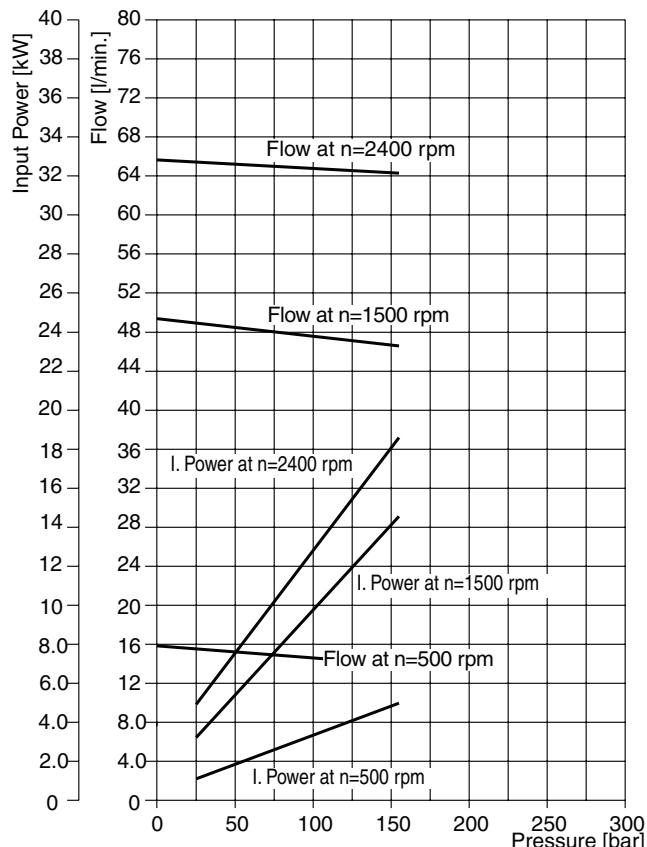
PGP511 - 10.0 CC



PGP511 - 19.0 CC



PGP511 - 33.0 CC



PI PGP-PGM UK.PMD RH

Fluid temperature: 45 °C ± 2K ; Viscosity: 36mm²/s ;

Inlet pressure: 0.9 + 0.1 bar absolute

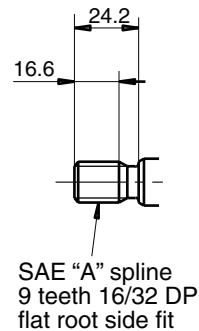
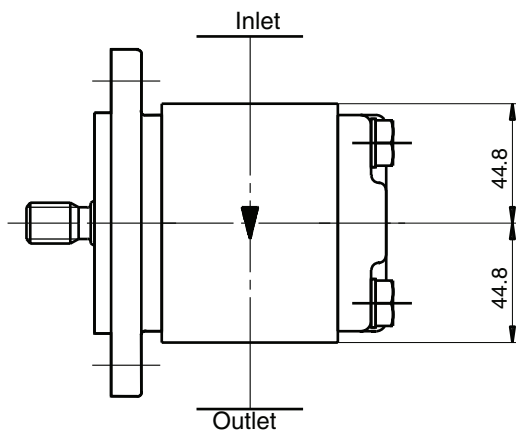
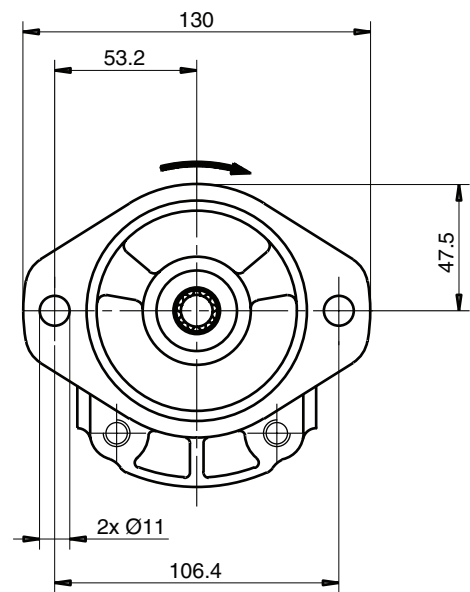
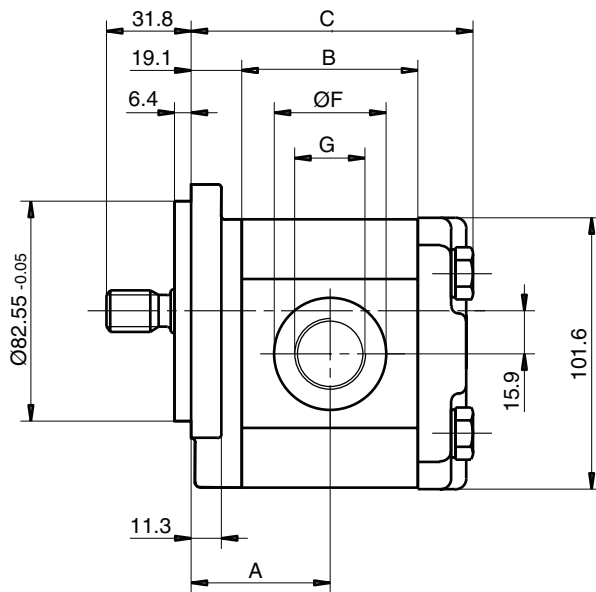
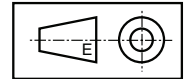


PGP511 A XXXX Y A1 H2 N SS PP B1 B1

“Y” = C (clockwise rotation)
 = A (counter-clockwise rotation)

Displacement		Dimension			Inlet port			Outlet port			Speed of rotation		Working pressure	Order number direction of rotation	
XXXX	cm ³ /rev	A	B	C	SS	G	F	PP	G	F	min. rpm	max. rpm	max. bar	clockwise	counter-clockwise
0040	4.0	42.6	47.0	86.7	E5	3/4"-14 BSP	42.0	E3	1/2"-14 BSP	34.0	500	3500	250		
0060	6.0	44.1	50.1	89.8	E5	3/4"-14 BSP	42.0	E3	1/2"-14 BSP	34.0	500	3500	250	334 9111 044	334 9112 621
0080	8.0	45.7	53.3	93.0	E5	3/4"-14 BSP	42.0	E3	1/2"-14 BSP	34.0	500	3500	250	334 9111 562	334 9112 622
0100	10.0	47.3	56.5	96.1	E5	3/4"-14 BSP	42.0	E3	1/2"-14 BSP	34.0	500	3500	250	334 9111 130	334 9112 628
0110	11.0	48.1	58.0	97.7	E5	3/4"-14 BSP	42.0	E3	1/2"-14 BSP	34.0	500	3500	250	334 9111 039	334 9112 023
0140	14.0	50.4	62.8	102.4	E5	3/4"-14 BSP	42.0	E3	1/2"-14 BSP	34.0	500	2700	250	334 9111 563	334 9112 623
0160	16.0	52.0	65.9	105.6	E6	1"-11 BSP	50.0	E5	3/4"-14 BSP	42.0	500	3500	250	334 9111 092	334 9112 060
0190	19.0	54.4	70.6	110.3	E6	1"-11 BSP	50.0	E5	3/4"-14 BSP	42.0	500	3200	250	334 9111 193	334 9112 624
0230	23.0	57.5	76.9	116.6	E6	1"-11 BSP	50.0	E5	3/4"-14 BSP	42.0	500	2700	210	334 9111 564	
0270	27.0	60.7	83.2	122.9	E6	1"-11 BSP	50.0	E5	3/4"-14 BSP	42.0	500	2300	180	334 9111 942	334 9112 494
0310	31.0	63.8	89.5	129.2	E6	1"-11 BSP	50.0	E5	3/4"-14 BSP	42.0	500	2000	160	334 9111 207	334 9112 229
0330	33.0	65.4	92.6	132.3	E6	1"-11 BSP	50.0	E5	3/4"-14 BSP	42.0	500	1800	150		334 9112 773

Dimensions (clockwise rotation shown)

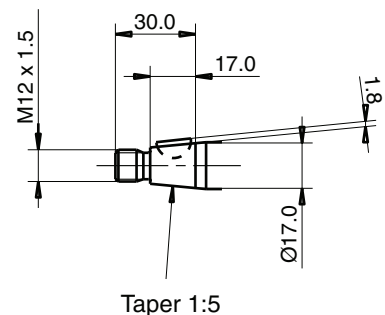
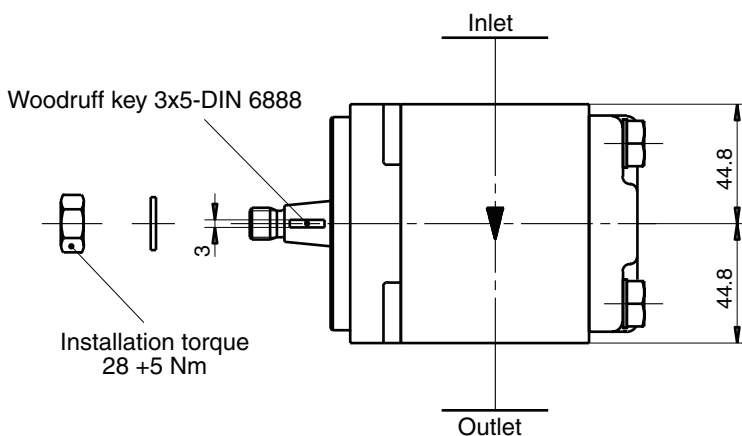
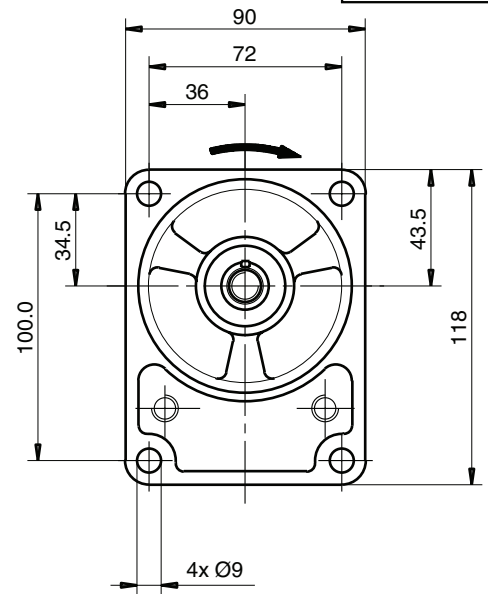
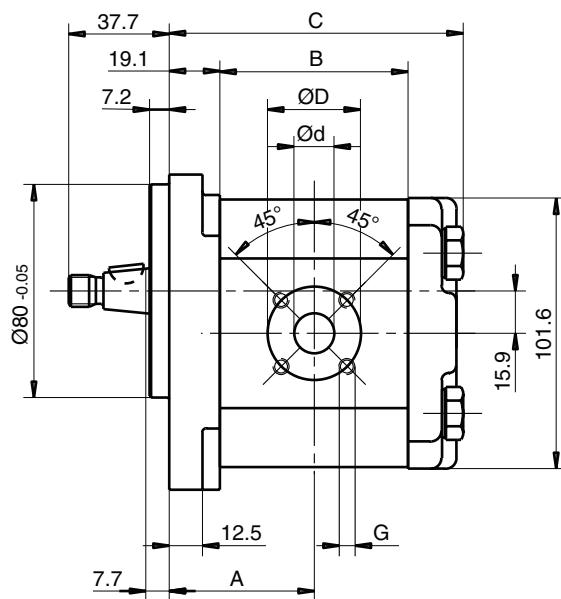
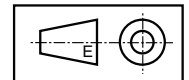


PGP511 A XXXX Y S1 D4 N SS PP B1 B1

“Y” = C (clockwise rotation)
 = A (counter-clockwise rotation)

Displacement XXXX	cm ³ /rev	Dimension			Inlet port				Outlet port				Speed of rotation		Working pressure max. bar	Order number direction of rotation	
		A	B	C	SS	d	D	G	PP	d	D	G	min. rpm	max. rpm		clockwise	counter-clockwise
0040	4.0	42.6	47.0	86.7	J7	20	40	M6	J5	15	35	M6	500	3500	250	334 9111 149	334 9112 289
0060	6.0	44.1	50.1	89.8	J7	20	40	M6	J5	15	35	M6	500	3500	250	334 9111 465	334 9112 298
0080	8.0	45.7	53.3	93.0	J7	20	40	M6	J5	15	35	M6	500	3500	250	334 9111 151	334 9112 291
0100	10.0	47.4	56.5	96.1	J7	20	40	M6	J5	15	35	M6	500	3500	250	334 9111 466	334 9112 292
0110	11.0	48.1	58.0	97.7	J7	20	40	M6	J5	15	35	M6	500	3500	250	334 9111 152	334 9112 238
0140	14.0	50.4	62.8	102.4	J7	20	40	M6	J5	15	35	M6	500	3400	250	334 9111 153	334 9112 239
0160	16.0	52.0	65.9	105.6	J7	20	40	M6	J5	15	35	M6	500	3000	250	334 9111 154	334 9112 120
0190	19.0	54.4	70.6	110.3	J9	26	55	M8	J8	18	55	M8	500	3250	250	334 9111 970	
0230	23.0	57.5	76.9	116.6	J9	26	55	M8	J8	18	55	M8	500	2750	225	334 9111 971	
0270	27.0	60.7	83.2	122.9	J9	26	55	M8	J8	18	55	M8	500	2350	190	334 9111 972	334 9112 807
0310	31.0	63.8	89.5	129.2	J9	26	55	M8	J8	18	55	M8	500	2100	165	334 9111 526	
0330	33.0	65.4	92.6	132.3	J9	26	55	M8	J8	18	55	M8	500	2000	155	334 9111 973	

Dimensions (clockwise rotation shown)



PI PGP-PGM UK.PMD RH

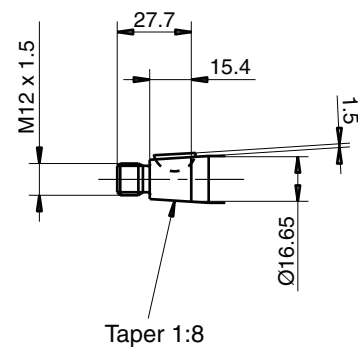
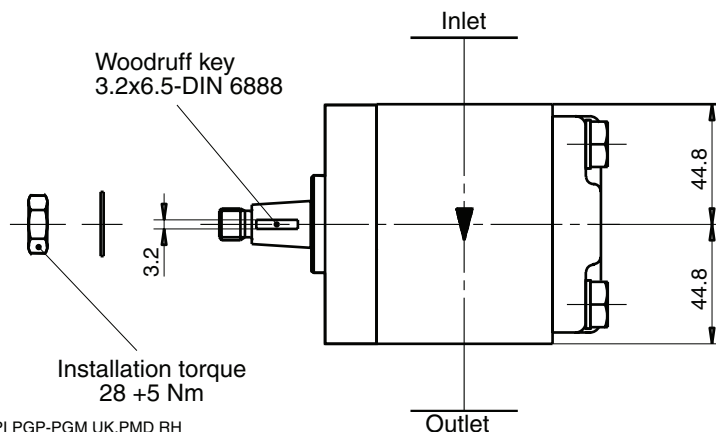
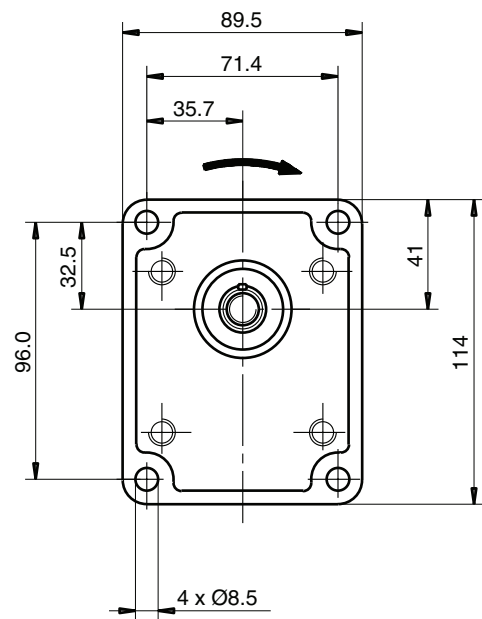
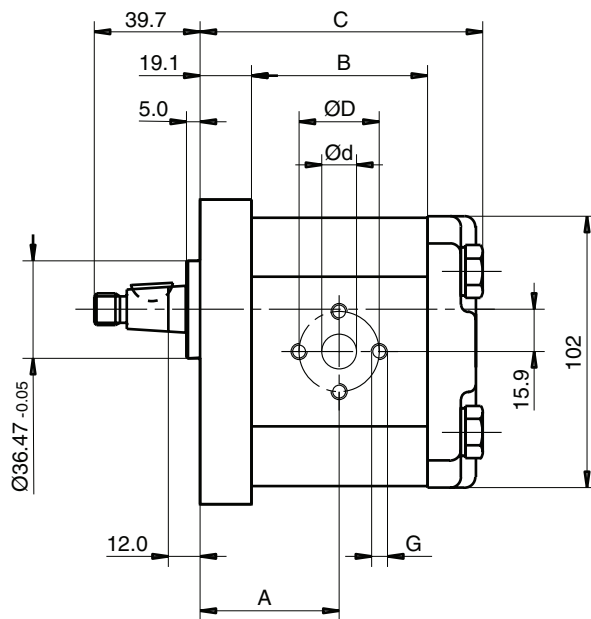
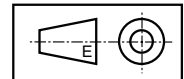


PGP511 A XXXX Y S2 D3 N SS PP B1 B1

“Y” = C (clockwise rotation)
 = A (counter clockwise rotation)

Displacement	Dimension	Inlet port			Outlet port			Speed of rotation		Working pressure	Order number direction of rotation						
		XXXX	cm ³ /rev	A	B	C	SS	d	D		G	PP	d	D	G	min. rpm	max. rpm
0040	4.0	42.6	47.0	86.7	L1	13	30	M6	L1	13	30	M6	500	3500	250	334 9111 403	334 9112 398
0060	6.0	44.1	50.1	89.8	L1	13	30	M6	L1	13	30	M6	500	3500	250	334 9111 404	334 9112 395
0080	8.0	45.7	53.3	93.0	L1	13	30	M6	L1	13	30	M6	500	2500	250	334 9111 091	334 9112 397
0100	10.0	47.3	56.5	96.1	L2	19	40	M8	L1	13	30	M6	500	3500	250	334 9111 975	334 9112 618
0110	11.0	48.1	58.0	97.7	L2	19	40	M8	L1	13	30	M6	500	3500	250	334 9111 976	334 9112 399
0140	14.0	50.4	62.8	102.4	L2	19	40	M8	L1	13	30	M6	500	3100	250	334 9111 292	334 9112 400
0160	16.0	52.0	65.9	105.6	L2	19	40	M8	L1	13	30	M6	500	2700	250	334 9111 293	334 9112 601
0190	19.0	54.4	70.6	110.3	L2	19	40	M8	L2	19	40	M8	500	2300	250	334 9111 977	
0230	23.0	57.5	76.9	116.6	L2	19	40	M8	L2	19	40	M8	500	1900	225	334 9111 295	
0270	27.0	60.7	83.2	122.9	L2	19	40	M8	L2	19	40	M8	500	1600	190	334 9111 296	
0310	31.0	63.8	89.5	129.2	L2	19	40	M8	L2	19	40	M8	500	1500	165	334 9111 978	
0330	33.0	65.4	92.6	132.3	L2	19	40	M8	L2	19	40	M8	500	1500	155	334 9111 297	

Dimensions (clockwise rotation shown)



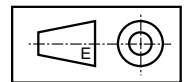
PI PGP-PGM UK.PMD RH



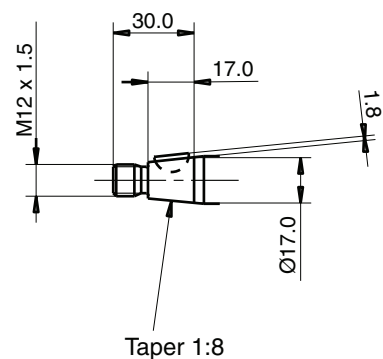
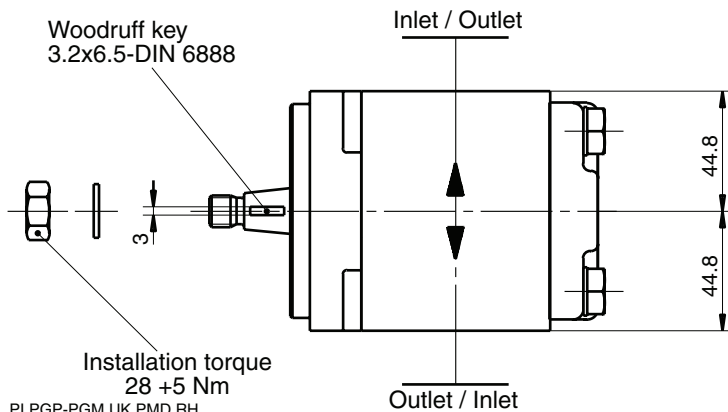
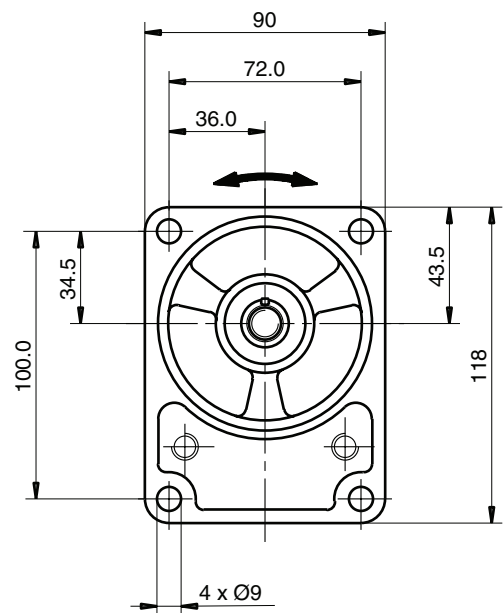
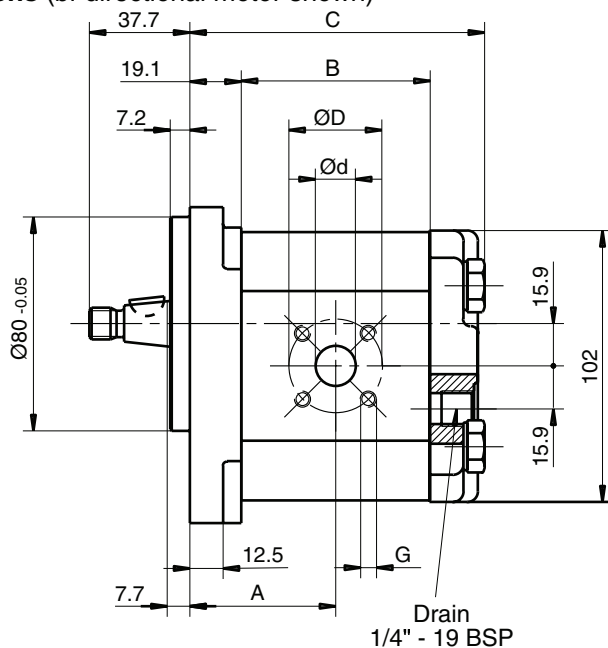
PGM511 A XXXX B S1 D4 N PP SS B1 B1 G4

“B” = B (bi-directional)

Displacement XXXX	cm ³ /rev	Dimension			Inlet port			Outlet port			Speed of rotation		Working pressure max. bar	Order number direction of rotation bi-directional		
		A	B	C	PP	d	D	G	SS	d	D	G			min. rpm	max. rpm
0060	6.0	44.1	50.1	89.8	J5	20	40	M6	J5	15	35	M6	500	3500	250	334 9219 253
0080	8.0	45.7	53.3	93.0	J5	20	40	M6	J5	15	35	M6	500	3500	250	
0100	10.0	47.3	56.5	96.1	J5	20	40	M6	J5	15	35	M6	500	3500	250	
0110	11.0	48.1	58.0	97.7	J5	20	40	M6	J5	15	35	M6	500	3500	250	
0140	14.0	50.4	62.8	102.4	J5	20	40	M6	J5	15	35	M6	500	3400	250	
0160	16.0	52.0	65.9	105.6	J5	20	40	M6	J5	15	35	M6	500	3000	250	
0190	19.0	54.4	70.6	110.3	J5	20	40	M6	J5	15	35	M6	500	3250	250	334 9219 356
0230	23.0	57.5	76.9	116.6	J5	20	40	M6	J5	15	35	M6	500	2750	225	
0270	27.0	60.7	83.2	122.9	J5	20	40	M6	J5	15	35	M6	500	2350	190	334 9219 200
0310	31.0	63.8	89.5	129.2	J5	20	40	M6	J5	15	35	M6	500	2100	165	
0330	33.0	65.4	92.6	132.3	J5	20	40	M6	J5	15	35	M6	500	2000	155	



Dimensions (bi-directional motor shown)



PI PGP-PGM UK.PMD RH